



# Formulation Design and Ex Vivo Evaluation of Carbopol -Incorporated Mucoadhesive Thermoreversible gels of Sucralfate for Rectal Drug Delivery

Shaik Firoz <sup>a\*</sup> and S. Rajasekaran <sup>b</sup>

<sup>a</sup> Research Scholar, Department of Pharmaceutics, Faculty of Pharmacy, Bhagwant University, Sikar Road, Ajmer, Rajasthan, India.

<sup>b</sup> Department of Pharmacology, Faculty of Pharmacy, Bhagwant University, Sikar Road, Ajmer, Rajasthan, India.

## Authors' contributions

This work was carried out in collaboration between both authors. Author SF designed the study, performed the statistical analysis, wrote the protocol, and wrote the first draft of the manuscript. Author SR managed the analyses of the study and literature searched. Both authors read and approved the final manuscript.

## Article Information

DOI: 10.9734/AJRIMPS/2022/v11i130181

## Open Peer Review History:

This journal follows the Advanced Open Peer Review policy. Identity of the Reviewers, Editor(s) and additional Reviewers, peer review comments, different versions of the manuscript, comments of the editors, etc are available here: <https://www.sdiarticle5.com/review-history/84959>

Original Research Article

Received 12 January 2022  
Accepted 17 March 2022  
Published 23 March 2022

## ABSTRACT

**Aim:** The present research is focused on preparation of Thermoreversible gels and screening ex vivo anti-inflammatory activity using croton oil induced hemorrhoid model.

**Study Design:** The animals were divided into four groups, n=8. After overnight fasting, hemorrhoids were induced by inserting sterile cotton swabs soaked in croton oil preparation into the anus of all group animals except normal control group.

**Place and Duration of Study:** Department of Pharmacology, Sree Vidyanikethan College of Pharmacy, Tirupati. between October 2021 to December 2021

**Methodology:** Experimental runs for optimization of formulation with the help of 2<sup>3</sup> factorial designs were designed [1]. Design of Expert program 6.0.6 (Stat-Ease Inc. Minneapolis, MN) was used to create formulations. Formulations were optimized using full factorial design. *In situ* rectal gel was

<sup>≡</sup> Research scholar,

\*Corresponding author: E-mail: firoz.kallur@gmail.com

prepared by the cold method [2]. As shown in Table 1, P188 was dissolved in DDW (de-ionized distilled water) including drug (1% w/v) at room temperature, and it was stored at 4°C for complete solubilization of P188. Carbopol solubilized in DDW, HPMC K4M and other mucoadhesive polymers were then slowly added to the prepared solution with continuous agitation at 4°C, and were kept for 24 h before their use. The composition of developed gel formulations is summarized in Table 1.

**Results:** Results In the first set of experiment, the application of croton oil to recto anal portion of rats induced significant increase in the Recto anal coefficient and serum level of pro inflammatory cytokines such as IL-6, and TNF- $\alpha$ . it also showed a significant increase in recto anal portion compared to normal control animals. However, the treatment with Sucralfate containing Thermoreversible gels has maintained the RAC and Interleukin -6 levels near to normal control group. These findings were further supported by histopathological examination wherein the animals treated with optimized formulation showed significant reversal in the severity of inflammation, vasodilatation in the recto anal portion, and presence of inflammatory cells.

**Conclusion:** The findings of the present study suggest that the improved experimental model described in the present work has advantages and the model has a provision for quantifying the inflammatory exudates in the induced experimental hemorrhoids. Also, it was found that, the optimized formulation ameliorated the croton oil-induced hemorrhoids in rats.

*Keywords: Rectal; drug release; mucoadhesive; thermoreversible gel; sucralfate.*

## 1. INTRODUCTION

In the early 1980s, the concept of mucosal adhesion or mucoadhesive was introduced into the controlled drug delivery area, and it is now a major part of a novel drug delivery system. Some of the potential sites for attachment of any mucoadhesive system make use of the property of adhesion of certain water-soluble polymers to the buccal cavity, nasal cavity, eyes, vagina, rectal area, sublingual route, and gastrointestinal area [3].

The use of a mucoadhesive system is required to ensure close and extended contact between the formulation and the rectal mucosa, allowing for a longer absorption time. When exposed to heat, thermoreversibility is a feature of certain substances that allows them to be reversed. When cooled, such substances form a gel, but when heated, they revert to a viscous fluid condition [6].

Rectal administration employs the rectum as a route of administration for medication and other fluids, which are absorbed through the rectum blood vessels. A drug delivered rectally has a faster beginning of effect [7]. When a local or systemic effect is desired, the rectal route is a viable, non-invasive alternate route of administration. The rectum provides a somewhat stable environment for drug delivery, allowing for a constant steady-state drug concentration in plasma and avoiding gastrointestinal absorption issues and hepatic first-pass metabolism to some extent [6]. As a result, the current study was

conducted to develop and test mucoadhesive thermoreversible gels of Sucralfate for rectal drug delivery, as well as to improve the drug's bioavailability when compared to the oral route.

Hemorrhoids are swollen and dilated blood vessels that occur in the lower rectum and anus [7]. Internal hemorrhoids develop in the area of the rectum above the pectinate line, which separates the upper two-thirds of the anal canal from the bottom one-third. Internal hemorrhoids are coated in a mucosa lining that is impervious to touch, discomfort, straining, or temperature changes [8].

Sucralfate is a antiulcer that can also be used to treat Proctitis from ulcerative colitis, and treat hemorrhoids. Sucralfate can be applied topically to treat hemorrhoids [7]. Sucralfate causes smooth muscle constriction and is frequently prescribed for the treatment of hemorrhoids [8], ostensibly to reduce pain and enlarged veins. Because veins contain less vascular smooth muscle in their walls than arteries, they are less likely to rupture [9].

## 2. MATERIALS AND METHODS

### 2.1 Materials

Sucralfate was obtained as a gift sample from Strides Arcolab, Bangalore (Purity 97%). Poloxamer 188 (P188) and Carbopol 934P (C934P) were purchased from Sigma-Aldrich. Hydroxy propyl methyl cellulose K4M was gifted by Colorcon Asia Pvt. Ltd., Goa India. All other

chemicals and reagents used in the study were of analytical grade.

**Preparation of formulations:** Experimental runs for optimization of formulation with the help of 2<sup>3</sup> factorial designs were designed [1]. Design Expert program 6.0.6 (Stat-Ease Inc. Minneapolis, MN) was used to create formulations. Formulations were optimized using full factorial design. In situ rectal gel was prepared by the cold method [2]. As shown in Table 1, P188 was dissolved in DDW (de-ionized distilled water) including drug (1% w/v) at room temperature, and it was stored at 4°C for complete solubilization of P188. Carbopol solubilized in DDW, HPMC K4M and other Mucoadhesive polymers were then slowly added to the prepared solution with continuous agitation at 4°C and were kept for 24 h before their use.

**Permeation studies through rectal mucosa:** Permeation studies were carried out using rectal mucosa. The modified Franz diffusion cell assembly was used. Throughout the study the whole assembly was kept at 37°C ±2°C. The medium used in acceptor compartment was 6.4 buffer solutions, which was continuously stirring by placing on a magnetic stirrer. The samples were withdrawn at predetermined, regular time intervals and an equal amount of fresh medium was replaced. Amount of drug in the withdrawn samples was determined after suitable dilutions.

**Experiment design:** Wistar rats were divided into four groups, Group I served as normal control and received only distilled water. Group II served as positive control and received 6% croton oil (10 ml). Group III was administered with Standard Formulation and 6% croton oil (10 ml). Group IV was administered with Optimized Formulation and 6% croton oil (10 ml). After overnight fasting, Evans blue (30 mg/kg i.v.) was injected in tail of animals of all the groups. After 30 min, hemorrhoids were induced in all groups except normal control group by applying croton-oil preparation (deionized water, pyridine, diethyl ether, and 6% croton oil in diethyl ether in the ratio of 1: 4: 5: 10). Sterile cotton swab (4mm in diameter) soaked in cotton oil preparation (100 ml) was inserted into the anus (about 22mm diameter) and kept for 10 s. development of edema was observed within 7 to 8h of induction of croton oil. After 24 h of induction, relevant treatment was given to all the groups for five days. On fifth day, 1 h after the treatment, blood was collected from the retro-orbital sinus. Inflammatory cytokines such as Tumour Necrosis

Factor-  $\alpha$  and IL-6 was estimated in blood by using Elisa Micro plate Reader (Erba Lisa Scan II, Mannheim). All animals were euthanized by exsanguinations under deep isoflurane anesthesia and recto anal tissue (20mm in length) was isolated and weighed. The RAC was calculated using the formula [10]

#### Recto anal coefficient (RAC )

$$\text{Rectoanal coefficient} = \frac{\text{Weight of rectoanal tissue (mg)}}{\text{Body weight (g)}}$$

**Severity Score:** The isolated recto anal tissue was visually observed and scored based on the severity; the findings showed a severity score of 0.12 ± 0.35 in normal control group and 1.50 ± 0.22 ( $P < 0.01$ ) in the positive control group, which was statistically significant compared to normal control, Interestingly, the treatment with standard formulation ;  $p < 0.01$ , treatment with Optimized formulation;  $p < 0.05$ , For histological examination, same tissue was examined for severity score and recto anal-coefficient by fixing the tissue in 10% neutral buffered formalin [11].

**Biochemical Estimations:** Hematological examination Hemoglobin (Hb), White blood cell (WBC), platelet count (PLT), were examined through fully automatic cell counter (Mindray Vector, Model No.BC-2300) [12].

**Cytokines assays:** Cytokines parameters such as tumor necrosis factor- $\alpha$  (TNF $\alpha$ ), Interlukin-6 (IL-6) were assayed in the serum samples by ELISA Reader (Merck, Serial No. 21041098, MIOS-Jounior) [13].

**Histopathological study:** Histological observation of the recto anal tissue was made to note the appearance of inflammatory cells, congestion, hemorrhage, vasodilatation, and medium to high degrees of necrosis [14].

**Stability studies:** The property of formulations to maintain its physical, chemical, microbial, therapeutic and toxic standards in storage container in its shelf-life is called as pharmaceutical stability. Stability testing permits recommended storage settings, re-test intervals, and shelf-lives by revealing how properties of a formula ingredient changes over time when exposed to different temperature, humidity, and light conditions [1]

In most circumstances, observing the pace at which a product declines at ambient temperature

takes more time. To avoid this unfavourable damage, faster stability investigations are proposed.

ICH stipulates duration for investigation as well as the circumstances of storage.

**Long-Term Analysis:** 25°C ± 2°C at 60% RH ± 5% for 12 Months

**Accelerated Analysis:** 40°C ± 2°C at 75% RH ± 5% for 6 Months [15]

**Procedure:** The purpose of the research was to see how temperature affected the optimal formulation \ For the formulation F5, stability tests were conducted for 3 months at 40°C ± 2°C with 75 % RH Small amount of formulation in cillin bottles was preserved in desiccator with a concentrated sodium chloride to maintain a relative humidity of 75%. After one, two, and

three months, samples were taken from the desiccator, which was placed in a hot air oven set 40°C ± 2°C [16].

### 3. RESULTS AND DISCUSSION

#### 3.1 Ex Vivo Permeation [18]

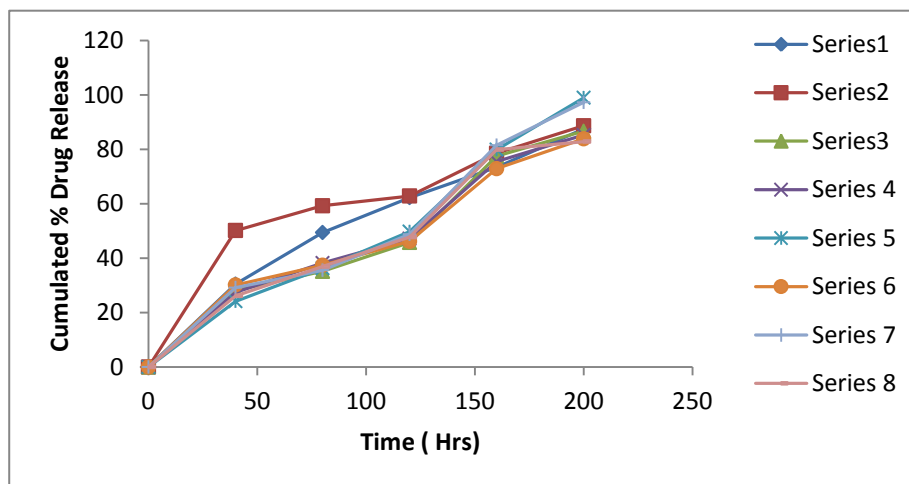
The % cumulative drug release was calculated against time and graph was plotted, whole experiment was performed in the triplicate. Ex-vivo diffusion profile was studied by freshly excised and treated sheep nasal mucosa. Bath temperature was maintained at 37±0.5°C throughout the experiment. Drug release profiles were showed in Fig. 1. From the results obtained, it was concluded that as the concentration of polymers increased, there was a decrease in the drug release rate [18].

**Table 1. Sucralfate- permeation studies**

S. No	Time	Formulation Code							
		F1	F2	F3	F4	F5	F6	F7	F8
1	40	30.45	50.15	28.15	27.35	24.15	30.15	29.15	26.15
2	80	49.41	59.23	35.13	38.23	36.27	37.37	35.56	36.89
3	120	62.23	62.83	45.76	47.16	49.76	46.16	48.77	47.73
4	160	73.41	78.51	77.51	75.51	79.87	72.87	81.47	79.87
5	200	87.53	88.61	86.61	85.23	98.93	83.83	97.23	82.83

**Table2. Recto anal coefficient (RAC)**

Parameters	Group I (Control)	Group II ( Croton oil)	Group III (Standard Formulation)	Group IV (Optimum Formulation)
Recto-anal weight (mg)	181.0 ± 24.92	570.1 ± 41.61 <sup>+++</sup>	248.0 ± 21.13 <sup>+++</sup>	211.0 ± 15.32 <sup>+++</sup>
RAC	0.91 ± 0.32	2.43 ± 0.40 <sup>+++</sup>	1.16 ± 0.16 <sup>+++</sup>	1.30 ± 0.5 <sup>+++</sup>



**Fig.1. Ex Vivo permeation studies**

All data are the means and standard deviations of eight animals in each group. The statistical significance of the control group (GI) vs. hemorrhoids induced group (GII) and hemorrhoids induced group + Stand Formulation (GIII) hemorrhoids induced group + Optimized Formulation treated group was determined (GIV) +++p< 0.0001: High Significant, ++p<0.001: Significant, +p<0.05: Less Significant and Ns p >0.05: Insignificant

**Severity Score:** Physical examination of isolated Recto anal tissue was done and based on severity it was scored. results revealed a severity score of  $0.14 \pm 0.25$  in the normal control group and  $1.60 \pm 0.32$  ( $P < 0.01$ ) in the positive control group, which was probability significant when compared to normal control. And treated group with standard formulation shown;  $p < 0.01$  and treatment with Optimized formulation;  $p < 0.05$  [159

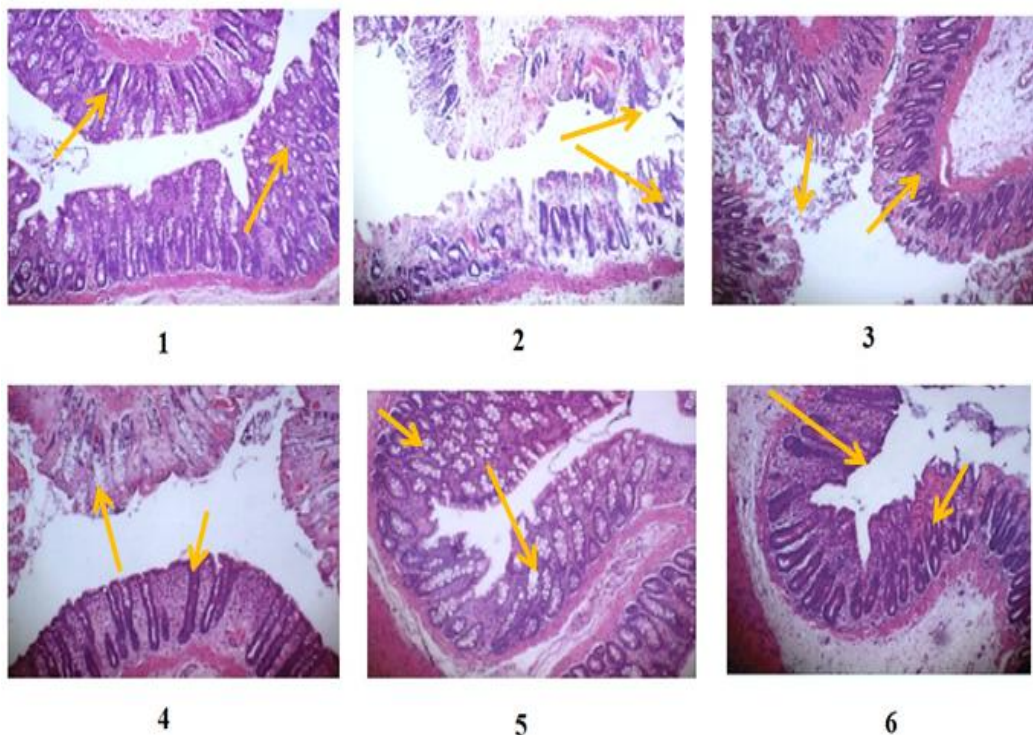
### 3.2 Biochemical Estimations

**Table 3. Hematological examination**

	Control	6% Croton Oil	Standard Formulation (for 5 days)	Optimized Formulation (for 5 days)
Hemoglobin (Hb)	$15.80 \pm 0.64$	$11.58 \pm 1.58^{***}$	$14.73 \pm 0.39^{***}$	$15.03 \pm 0.19^{***}$
White blood cell (WBC)	$11.4 \pm 0.65$	$17.30 \pm 3.63^{***}$	$13.45 \pm 1.85^{**}$	$12.12 \pm 2.45^{**}$
Platelet count (PLT)	$604.75 \pm 62.89$	$192.25 \pm 19.22^{***}$	$525.25 \pm 56.72^{***}$	$610.25 \pm 16.32^{***}$

**Table 4. Cytokines assays**

	Control	6% Croton Oil	Standard Formulation (for 5 days)	Optimized Formulation (for 5 days)
Tumor necrosis factor- $\alpha$	$4.70 \pm 0.329$	$15.88 \pm 0.186$	$6.71 \pm 0.037$	$5.12 \pm 0.046$
Interlukin-6	$2.15 \pm 0.141$	$6.38 \pm 0.137$	$3.91 \pm 0.072$	$3.01 \pm 0.021$



**Fig. 2. Histopathological study**

1- The normal control group had a normal appearance and structure.

2- In untreated positive control group, there is marked to severe inflammation, hemorrhage, congestion, degeneration, dilatation of blood vessels, and necrosis.

3 & 4 - The rat rectal region treated with standard Sucralfate gel demonstrating minimal inflammation, congestion, hemorrhage, blood vessel dilatation, degeneration, and necrosis;

5 - The rat rectal region treated with Sucralfate thermoreversible gel (F5) showing near normal (H&E × 200)

6 - The rat rectal region treated with Sucralfate thermoreversible gel (F5) apper near normal (H&E × 200)

**Stability studies:** Formulations were analyzed for various evaluation parameters after exposure to stability conditions (40°C ±2°C at 75% RH ±5% RH) [20,21].

The studies revealed that there were no significant differences in the evaluated data from initial after stability studies of Clarity, pH, Gelation temperature, P<sup>H</sup> drug content, and *In-Vitro* drug permeation studies, and all of the values were found to be within acceptable limits after the stability studies at 40°C 2°C at 75 5% RH for optimized formulations.

#### 4. CONCLUSION

Form the prepared thermoreversible Mucoadhesive gels, Formulation F5 appears to have the greatest potential for producing thermoreversible rectal gels out of the eight formulations. Some of the assessment factors used to assess the accuracy of formulation ex-vivo permeation studies, formulation F5 was found to be the best for treating hemorrhoidal activity with a temperature-induced Rectal in situ gelling device.

#### CONSENT

All authors declare that 'written informed consent was obtained from the patient (or other approved parties) for publication of this case report and accompanying images.

#### ETHICAL APPROVAL

All authors hereby declare that "Principles of laboratory animal care" (NIH publication No. 85-23, revised 1985) were followed, as well as specific national laws where applicable. All experiments have been examined and approved by the appropriate ethics committee"

#### DISCLAIMER

The products used for this research are commonly and predominantly use products in our area of research and country. There is absolutely no conflict of interest between the authors and producers of the products because we do not intend to use these products as an avenue for any litigation but for the advancement of knowledge. Also, the research was not funded by the producing company rather it was funded by personal efforts of the authors.

#### ACKNOWLEDGEMENTS

The authors express deep gratitude to Strides Arcolab, Bangalore, for providing the gift sample of the drug Sucralfate. The authors are also immensely grateful to Sree Vidyanikethan College of Pharmacy, A. Rangampet, for providing all the facilities required to carry out the research work.

#### COMPETING INTERESTS

Authors have declared that no competing interests exist.

#### REFERENCES

1. Nahla S. Barakat.: In vitro and In vivo characteristics of a Thermogelling rectal Delivery system of Etodolac. AAPS Pharm Sci Tech. 2009;10(3):724.
2. Cho HJ, Balakrishnan P, Park EK, Song KW, Hong SS, Jang TY, Poloxamer/cyclodextrin/chitosan-based thermoreversible gel for intranasal delivery of fexofenadine hydrochloride. J Pharm Sci. 2011;100:681-91.
3. Gonjari ID, Hosmani AH, Karmarkar AB, Godage AS, Kadam SB, Dhabale PN, Formulation and evaluation of in situ gelling thermoreversible mucoadhesive gel of fluconazole. Drug Discov Ther. 2009;3: 6-9.



4. El-Leithy ES, Shaker DS, Ghorab MK, Abdel-Rashid RS. : Evaluation of mucoadhesive hydrogels loaded with diclofenac sodium-chitosan microspheres for rectal administration. *AAPS Pharm Sci Tech.* 2010;11:1695-702.
5. Anmol C, Rajdeep S, Agarwal PN. : Management of hemorrhoids. *Ind J Clin Pract.* 2014;25:577-80.
6. Rahimi R, Abdollahi M.: A systemic review of the topical drugs for post hemorrhoidectomy pain. *Int J Pharmacol.* 2012;8:628-637.
7. Ala S, Saeedi M, Eshghi F Rafati M, Hejazi V, Hadianamrei R. Efficacy of 10% sucralfate ointment in the reduction of acute postoperative pain after open hemorrhoidectomy: a prospective double-blind, randomized, placebo-controlled trial. *World J Surg.* 2013;37(1): 233-238.
8. Gupta PJ, Heda PS, Kalaskar S, Tamaskar VP: Topical sucralfate decreases pain after hemorrhoidectomy and improves healing: a randomized, blinded, controlled study. *Dis Colon Rectum.* 2008;51(2):231-234.
9. Kudaravalli P, John S. Sucralfate. [Updated Jul 19]. In: StatPearls [Internet]. Treasure Island (FL): StatPearls Publishing; 2021. Available: <https://www.ncbi.nlm.nih.gov/books/NBK551527>
10. Prabhakar AN, Mallapa DP, Panchaxari GA, Paresh M.: Formulation and characterization of tapentadol loaded emulgel for topical application. *Ind J Pharm Educ Res.* 2017;51:525-35.
11. Bagul U, Gujar K, Dhat S, Aphale S, Bhavsar M.: In vitro study of mucoadhesive strength of polymers for mucoadhesive drug delivery systems. *Int J Curr Pharm Res.* 2009;1:42-6.
12. Umme H, Shivakumar HG: Development of miconazole nitrate thermo sensitive bioadhesive vaginal gel for vaginal candidiasis. *Am J Adv Drug Deliv.* 2013;1: 358-68.
13. Bhupen K, Kritika S, Bansmita K: Development and characterization of mucoadhesive microsphere loaded intranasal gel of venlafaxine HCl. *Asian J Pharm Clin Res.* 2016;3 Suppl 9:139-44
14. Contreras MD, Sanchez R.: Application of a factorial design to the study of the flow behavior, spreadability and transparency of a carbopol ETD 2020 gel. *Int J Pharm.* 2002;234:149-57.
15. Firoz S, Padmini K, et al. Formulation development and evaluation of carbopol-incorporated thermoreversible gels of pseudoephedrine for rectal drug delivery. *Asian Journal of Pharmaceutical and Clinical Research.* 2019;12(5):231-5.
16. Meenakshi P, Thakkar H, Kasture PV. Preparation and evaluation of thermoreversible formulations of flunarizine hydrochloride for nasal delivery. *Int J Pharm Pharm Sci.* 2010;2:116-20.
17. Joshu AJ, Kumar AA, Verjina CU, Vasudevan DT, Saritha A. Formulation and evaluation of antiaging phytosomal gel. *Asiam J Pharm Clin Res.* 2018;3:409-22.
18. Kumar MV, Aravindram AS, Rohitash K, Gowda DV, Parjanya K. Formulation and evaluation of in-situ gel of bromhexine hydrochloride for nasal delivery. *Der Pharmacia Sinica.* 2012;3:699–707.
19. Sheeba JM, Sreeja C, Anoop KR: Thermo reversible mucoadhesive gel for nasal delivery of antihypertensive drug. *Int J Pharm Sci Rev Res.* 2013;21:57-63).
20. Elhady A, Seham S, Naheed DM, Gehanne AS, Noha MZ. : Development of in situ gelling and mucoadhesive mebeverine hydrochloride solution for rectal administration. *Saudi Pharm J.* 2003;11:8.
21. Patil PR, Salve VK, Thorat U, Shahi SR: Formulation and evaluation of ion-sensitive in-Situ nasal gel of zolmitriptan. *Int J Pharm Pharm Sci.* 2015;7:47886.

© 2022 Firoz and Rajasekaran; This is an Open Access article distributed under the terms of the Creative Commons Attribution License (<http://creativecommons.org/licenses/by/4.0>), which permits unrestricted use, distribution, and reproduction in any medium, provided the original work is properly cited.

*Peer-review history:*  
The peer review history for this paper can be accessed here:  
<https://www.sdiarticle5.com/review-history/84959>